

Wind Sign

Outdoor



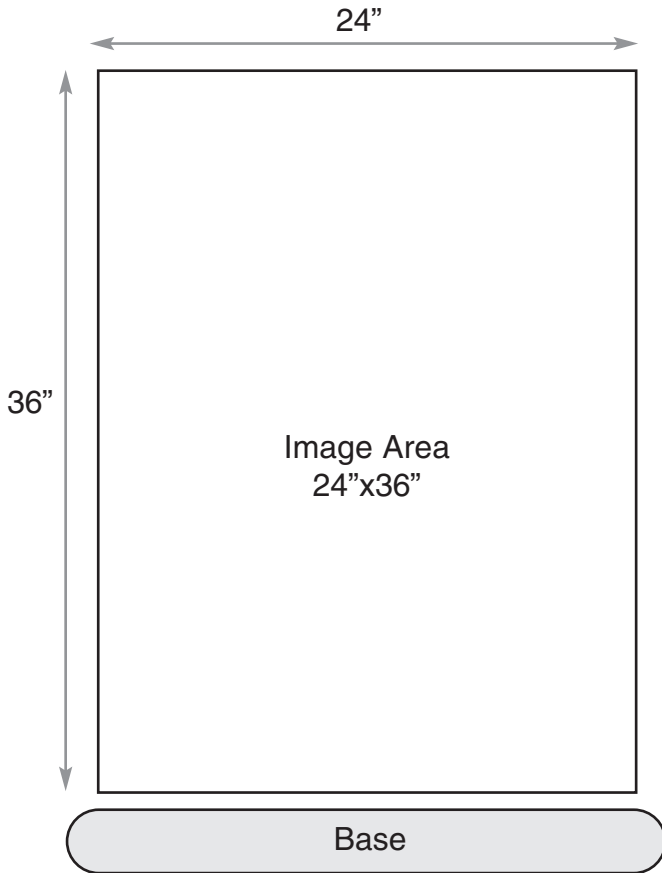
Very easy to use & setup
Quality Design

- **Resists strong head-on winds**
- **Change signs in seconds**
 - "Quick-Change"™ feature, signs easily slide in and out
- **All plastic frame**
 - eliminates torn, bent, or rusted frames
- **Plastic base has two built-in wheels**
 - can be filled with dry sand
 - can be moved easily
- **Tool free assembly**



Coil springs resist strong winds and return the sign to an upright position

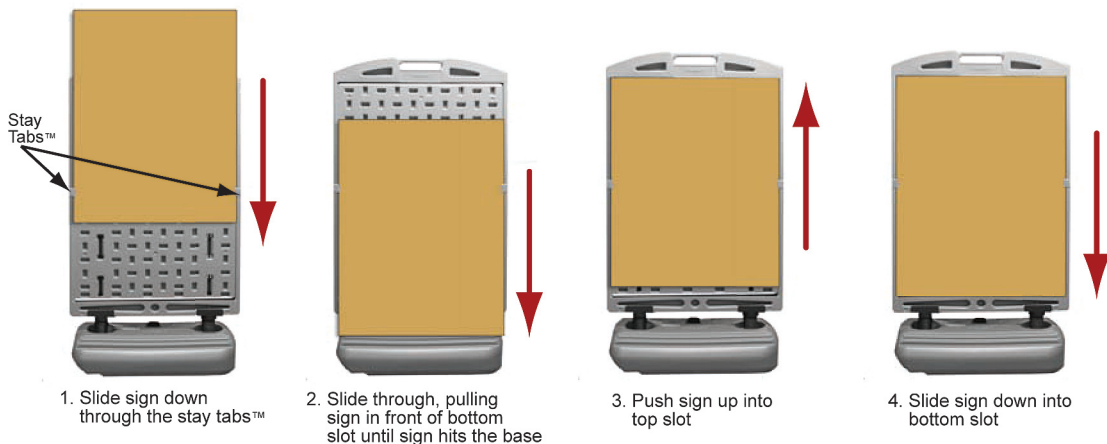
Wind Sign Outdoor



- Panel Size 24" x 36" (live area)
- Add 1/4" bleed on the top & sides
- 150dpi
- CMYK not RGB
- Outline or curve any text
- Save as: PDF, tiff, eps or jpeg

Specifications	Wind Sign
Color	Gray
Dimensions (Frame Only)	42.9"H x 26"W x 2.5"D
Dimensions (Base Only)	7.1"H x 28.7"W x 18.1" D
Dimensions Assembled	53"H x 28.7"W
Total Weight Assembled	25 lbs.
Base Sand Ballasting	Use a max. of 115 lbs. of dry sand

Sign Insertion Instructions



- Keep critical graphics like text & logos away from the trim edge.
- Upload Portal - www.advancegraphics.ca/fileuploadportal.htm



52 Scott St. West., St. Catharines, ON L2R 1C9

Toll Free 1-877-684-7567

info@advancegraphics.ca  www.advancedisplays.ca